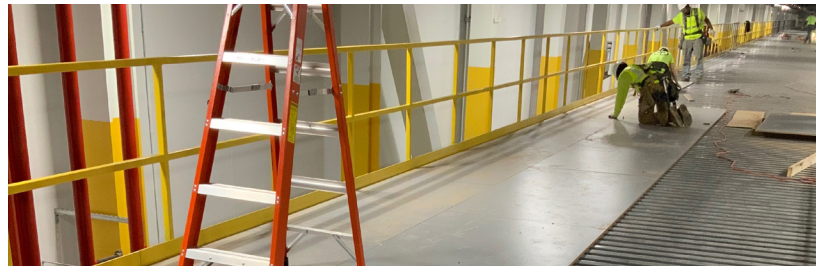
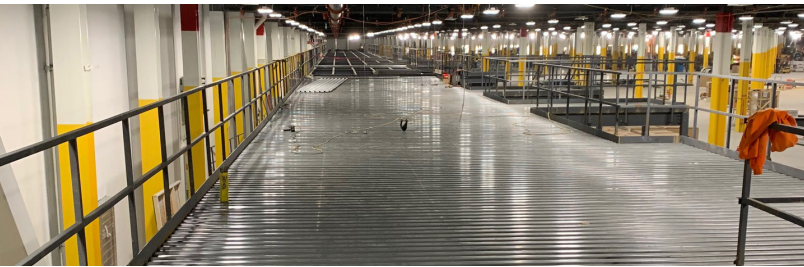




# resinDEK®

## SYSTEMS INTEGRATOR SEEKS A FULLY COMPLIANT ESD FLOOR ◆ A RESINDEK® SUCCESS STORY



### SYSTEMS INTEGRATOR CHOOSES RESINDEK® WITH ESD FOR A FULLY COMPLIANT ESD FLOOR

Legacy Platform Co-Founder's Bill Jones and John Sloan have been specifying ResinDek flooring panels from Cornerstone Special Wood Products, LLC® for over 10 years. So, when a general contractor asked Bill to recommend an electrostatic dissipative (ESD) flooring product for a mezzanine being constructed in an e-commerce fulfillment center in northern Ohio, Jones knew precisely where to turn. *"Without hesitation, I told him that his project needed ResinDek,"* he recalls.

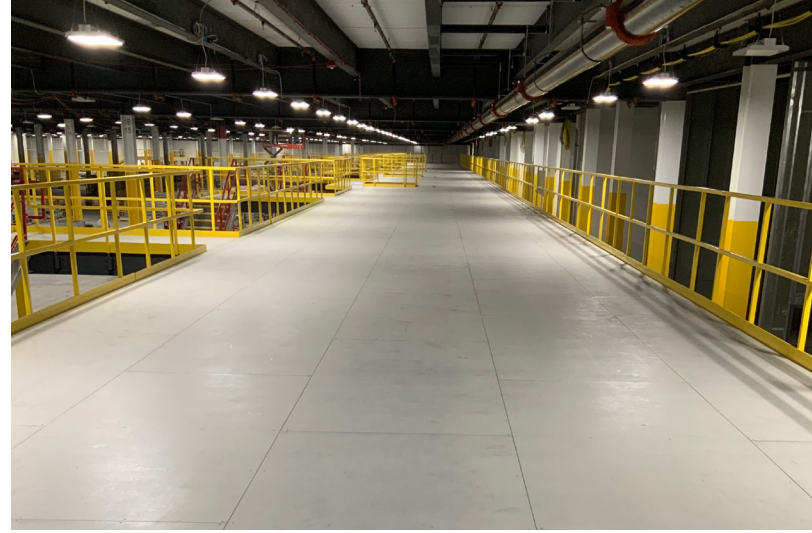
Jones' company, Legacy Platform, offers design, integration, and procurement services to companies building industrial warehouses and distribution centers and to general contractors. Legacy Platform specializes in helping e-commerce and fulfillment operations maximize their usable floorspace through new and retrofit construction of prefabricated or stick-built mezzanines and industrial work platforms — for which Cornerstone's flooring products are specifically engineered.

Jones' customer contacted him with the inquiry, as well as the specifications for the 20,000-square-foot platform on December 18. As the platform's foundational structure was already mid-way through construction at that point, Cornerstone's engineering team wasted no time. Despite a revision to the project's total square footage, the team produced a design and layout for the flooring, as well as a quote by the next day. *"It was an extremely fast turnaround,"* notes Jones. *"I've always had great customer service experiences with Cornerstone Specialty Wood Products; this was even more impressive, particularly considering it was during the end-of-year holidays."*



| [www.resindek.com](http://www.resindek.com) | [info@resindek.com](mailto:info@resindek.com) | 888.755.3048 | 513.772.5560

Given the requirements of the project, Cornerstone’s engineering team specified ResinDek LD panels with Gray Diamond Seal® 2 ESD coating. ResinDek LD is a cost-effective flooring solution that supports dynamic and static pallet jack loads up to 2,000 pounds. The Gray Diamond Seal 2 ESD coating provides a fully compliant ESD finish to protect equipment and automation from electro-static discharge. In fact, it will keep the voltage under 50 volts, thus giving a much higher level of protection than commonly used anti-static finish.



As often happens in construction, some delays in January led to the order being placed later than intended, Jones says. *“Not a problem for Cornerstone. They expedited the fabrication and delivery,”* he recalls. *“Then, a few days after the flooring system was delivered, there was a change in project scope, adding a few hundred square feet to the platform. Rather than simply selling us more product, Cornerstone’s engineering team revised the deck layout to fully cover the platform without any additional sheets required.”*

When it came time for the sub-contractors to install the flooring, Jones was joined by Cornerstone’s Keith Shipman, National Sales Manager, on-site at the facility. The pair trained the crew on how to properly install the ResinDek panel system, ensuring that the flooring was completed quickly.

*“A week later in the middle of the installation, I had a call from the contractor who realized they had misplaced some of the wood screws. I happened to be at a trade show, and connected with the Cornerstone team at their booth,”* Jones says. *“Within 20 minutes, they had the situation resolved – shipping the screws overnight to the site, no questions asked – not even for a credit card number. They truly are a phenomenal partner, going above and beyond for both me and my customers.”*

Product Name (B Deck Gauge)	Pallet Jack & Product Load Limits	Robot & Product Load Limits	Maximum Robot Contact Pressure	Thickness	Weight (PSF)		Optional Finishes				
					ResinDek®	ResinDek® with MetaGard®	UF	Gray Diamond Seal® Antistatic	Gray Diamond Seal® ESD	TriGard® ESD	MetaGard®
ResinDek® LD (20ga) <sup>1</sup>	up to 2,000 lbs.	up to 500 lbs.	500 psi	3/4"	2.8	4.2	✓	✓	✓	✓	✓
ResinDek® MD (20ga) ResinDek® MD (18ga)	up to 2,500 lbs. up to 3,500 lbs.	up to 2,000 lbs. up to 3,000 lbs.	750 psi 1,000 psi	3/4"	3.5	4.9	✓	✓	✓	✓	✓
ResinDek® HD (18ga) ResinDek® HD - B Deck Not Required <sup>1,2</sup>	up to 4,500 lbs. N/A	up to 4,000 lbs. up to 750 lbs.	1,200 psi 750 psi	3/4"	3.8	5.2	✓	✓	✓	✓	✓
ResinDek® MAX (18ga)	up to 8,000 lbs.	up to 6,000 lbs.	1,500 psi	1-1/2"	7.6	N/A	N/A	✓	✓	✓	✓
ResinDek® Xspan® B Deck Not Required <sup>3</sup>	up to 3,000 lbs.	up to 2,500 lbs.	900 psi	1-1/8"	5.2	6.6	✓	✓	✓	✓	✓
ResinDek® Xspan® FR B Deck Not Required <sup>4</sup>	up to 3,800 lbs.	up to 3,500 lbs.	1,250 psi	1-1/8"	6.0	7.6	N/A	✓	✓	✓	✓

**NOTES:**

- 1** Not Suitable for AGVs
  - 2** ResinDek HD robot and product load values above are calculated with 225 psf uniform loads at 16" center supports
  - 3** ResinDek Xspan load values above are calculated with 375 psf uniform loads at 16" center supports
  - 4** ResinDek Xspan FR load values above are calculated with 450 psf uniform loads at 16" center supports
- For flooring used with corrugated B Deck: Please note load values above are calculated on 36" beam spacing, increased spacing will reduce capacity. Floor deflection is L/240
  - For flooring solutions with no B Deck: All allowable loads are based on a two span condition. Uniform load values are based on L/240 deflections, any deviation can positively or negatively impact these values. Please contact Cornerstone for other span conditions.



12020 Tramway Drive  
Cincinnati, OH 45241  
Toll Free: 888.755.3048 | Tel: 513.772.5560  
Email: info@resindek.com | www.resindek.com

